

Bending



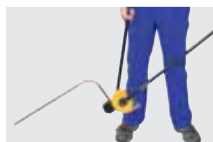
Single-hand tube bender

88



Electric pipe and tube bender

89



Hand tube bender

94

REMS Swing

Single-hand tube bender

Practical single-hand tool for exact tube bending up to 90°. Ideal for on-site work.

Soft copper pipes, also thin-walled	Ø 10–22 mm Ø 3/8–7/8" s ≤ 1 mm
Coated soft copper tubes	Ø 10–18 mm Ø 3/8–5/8" s ≤ 1 mm
Coated C-Stahl pipes of pressfitting systems	Ø 12–18 mm
Soft precision steel tubes	Ø 10–18 mm s ≤ 1 mm
Multi-layer composite tubes	Ø 14–32 mm

REMS Swing – bending tubes where they are installed. Universal use for many tubes. Fast operation through quick-acting in-feed forward and release. Proven, reliable ratchet feed. Ideal also for coated tubes.

Universal use

For sanitary, heating, air conditioning, refrigerating and hydraulic applications. Also for copper thin-walled heating tubes according to DIN EN 1057 and for tubes of pressfitting systems.

Cost advantage

Bender recovered after a few bends through savings on fittings. No costs for fittings, storage, procurement. Savings in soldering joints, pressing joints and working hours. Higher safety thanks to fewer pipe joints.

Execution

Compact, job site-proven. Handy and light, only 1.3 kg. Can be used anywhere, free-hand, in confined areas. Simple, fast operation, e.g. bends Ø 22 mm in only 9 s. Quick-acting in-feed and release saves time and effort. Marked bending formers for exact bending. Crossover, swan-neck, reverse bends possible. Easy and rapid changing of bending formers.

Bending formers and sliding pieces

In high-strength, high-slide, glass-fibre reinforced polyamide. Application of bending formers, see table right.

Drive

Only 1 sturdy bender drive with proven, reliable ratchet feed for the complete work range up to Ø 32 mm. 1 universal crossbar, reversible according to the required tube size, with bending formers up to Ø 26 mm, 7/8". 1 crossbar with sliding pieces for Ø 32 mm. Device for reverse bends up to Ø 22 mm, 7/8".



German Quality Product



Accessories

Description	Art.-No.	suitable for				
Device for reverse bends on installed pipes	153140					
Crossbar for bending former Ø 32	153115					
Bending former for tubes Ø mm/inch	Bending radius mm	Cu	Cu-U	St 2394-U	St 2391-2394	V
10, 3/8	30	•			•	
12, 10 U, 1/2	36	•	•		•	
14, 12 U	50	•		•	•	
15, 12 U, 5/8	55	•	•		•	
16, 14 U	55	•	•		•	•
17, 15 U	60			•		•
18, 14 U, 15 U, 16 U, 3/4	72	•	•		•	•
20, 18 U	79	•	•	•		•
22, 18 U, 7/8	86	•	•			•
25, 26	88					•
32	128					•

Cu: soft copper tubes, also thin-wall
 St 2394-U: coated C-Stahl pipes of pressfitting systems DIN 2394
 St 2391-2394: soft precision steel tubes DIN 2391-2394
 U: coated
 V: multi-layer composite tubes of pressfitting systems

Supply format

REMS Swing Set. Single-hand tube bender Ø 10–32 mm, Ø 3/8–7/8", up to 90°. Soft copper tubes Ø 10–22 mm, Ø 3/8–7/8", s ≤ 1 mm, coated soft copper tubes Ø 10–18 mm, Ø 3/8–5/8", s ≤ 1 mm, coated C-Stahl pipes of pressfitting systems Ø 12–18 mm, soft precision steel tubes Ø 10–18 mm, s ≤ 1 mm, composite tubes Ø 14–32 mm. Up to Ø 26 mm with bender drive, bending formers, universal crossbar with sliding pieces, in sturdy steel case/plastic case. Up to Ø 32 mm with bender drive, bending formers, 2 universal crossbars with sliding pieces, in sturdy plastic case.

Description	mm	inch	Art.-No.
Set 12-15-18-22		1/2-5/8-3/4-7/8"	153025
Set 10-12-15-18-22		3/8-1/2-5/8-3/4-7/8"	153021
Set 12-14-16-18-22		1/2-3/4-7/8"	153020
Set 14-16-20-25/26			153026
Set 14-16-18-20-25/26			153022
Set 16-20-25/26-32			153029
Set Allround 22			
10-12-14-15-16-17-18-20-22		3/8-1/2-5/8-3/4-7/8"	153027
Set 16-18-20-25/26-32			153023
Set Allround 32			
10-12-14-15-16-17-18-20-22-25/26-32		3/8-1/2-5/8-3/4-7/8"	153028



REMS Curvo 50

Electric pipe and tube bender

Universal, compact electric tool for cold bending of pipes and tubes up to 90°. Can be used anywhere, without vice. For workshop, job site, repair.

Steel pipes DIN EN 10255 (DIN 2440)	Ø 1/4–1 1/4"
Hard, half-hard, soft copper tubes	Ø 10–42 mm
Thin-wall copper tubes	Ø 10–35 mm
Pipes of press fitting systems made of stainless steel	Ø 12–42 mm
Carbon steel, also coated	Ø 12–35 (28) mm
Multi-layer composite tubes	Ø 14–50 mm
Further materials, see REMS Curvo	

REMS Curvo 50 – wrinkle free bending of large pipes.

Universal use

For metalwork and in sanitary, heating, air conditioning, refrigeration and hydraulic applications. Specially suited for steel pipe DIN EN 10255 (DIN 2440), pipe for pressfitting systems, for hard and half hard copper pipe and for thin-walled copper heating pipe according to DIN EN 1057.

System advantage

Bending and back formers from REMS Curvo, REMS Akku-Curvo and REMS Sinus (page 95) also fit in the REMS Curvo 50 drive machine. Therefore simple, inexpensive stocking. No confusion possible.

Cost advantage

Bender cost recovered after a small number of bends. No costs for fittings, storage, procurement. Savings in soldering joints, pressing joints and working hours. Higher safety thanks to fewer pipe joints.

Execution

Compact, handy electric tool with integral absorption of torque during bending (Patent DE 39 03 041, Patent US 5,056,347). Can be used anywhere, anytime. No setting. Simple, effortless, fast working, e.g. 90° bends of steel pipe Ø 1 1/4" in only 37 s. Fast and creep speed operation for precise bending. Swan-neck, U-bends possible.

Bending formers and back formers

Optimum mating of bending formers and back formers ensures sliding appropriate to the material without cracks and wrinkles. Angle scale provided on each bending former and mark on the back former ensure precise bending. Rapid change of bending formers and back formers. Bending formers and back formers for different sizes, materials and bending radii.

Bending formers and back formers REMS Curvo 50 (Ø 35 R100 to Ø 50 R140): Form and pressure resistant bending formers in ductile iron and back formers in high-strength, high-slide glass-fibre reinforced polyamide. Bending formers and back formers REMS Curvo: All bending formers and back formers from REMS Curvo can be used, see table page 89.

Drive

Robust, maintenance-free gear. Final point safety in both directions through safety slipping clutch. Proven, powerful universal motor, 1000 W. Right and left-hand rotation. Stepless electronic safety switch for rapid and creep speed operation.

Bending lubricant

REMS bending spray ensures a permanent lubricating film for reducing energy expenditure and uniform bending. High-pressure-proof, acid-free. CFC-free, so ozone-harmless.

Supply format

REMS Curvo 50 Basic-Pack. Electric pipe and tube bender Ø 10–50 mm, up to 90°. Steel pipes DIN EN 10255 Ø 1/4–1 1/4", hard, half-hard and soft copper tubes, Ø 10–42 mm, thin-wall copper tubes Ø 10–35 mm, pipes of the press fitting systems made of stainless steel Ø 12–42 mm, carbon steel Ø 12–35 mm, carbon steel coated Ø 12–28 mm, multi-layer composite tubes Ø 14–50 mm and others. Drive unit with maintenance-free gear and safety slipping clutch, universal motor 230 V or 110 V, 50–60 Hz, 1000 W, stepless electronic safety switch, right and left-hand rotation. Adaptor block 10–40, Support 10–40, insert bolt. In sturdy steel case.

	Art.-No.
	580110

Other voltages on request.

Accessories

Description	Art.-No.
Bending former and back former Ø 35 R100	581500
Bending former and back former Ø 42 R140	581510
Bending former and back former Ø 50 R135	581540
Bending former and back former Ø 1" (33,7 mm) R100	581520
Bending former and back former Ø 1 1/4" (42,4 mm) R140	581530
Steel case with insert for each bending former and back former R100 and R135/R140	586012
Adaptor block 10–40, Support 10–40, for bending formers and back formers REMS Curvo, REMS Akku-Curvo, REMS Sinus see page 95.	582120
Further bending formers and back formers see page 95.	
Insert bolt	582036
REMS bending spray, 400 ml	140120



Patent DE 39 03 041
Patent US 5,056,347



German Quality Product



Universal, compact electric tool for cold bending of pipes and tubes up to 180°. Can be used anywhere, without vice. For workshop, job site, repair.

Hard, half-hard, soft copper tubes also thin-wall	Ø 10–35 mm Ø 3/8–1 3/8"
Coated soft copper tubes, also thin-wall	Ø 10–18 mm
Pipes of press fitting systems made of stainless steel	Ø 12–28 mm
Carbon steel (coated)	Ø 12–28 mm
Soft precision steel tubes	Ø 10–28 mm
Steel pipes DIN EN 10255 (DIN 2440)	Ø 1/4–3/4"
Electric conduit DIN EN 50086	Ø 16–32 mm
Multi-layer composite tubes	Ø 14–40 mm

REMS Curvo – wrinkle-free bending. Universal for many pipes and tubes. Instant use without setting. Fast and creep speed operation for precise bending. Rapid change of bending and back formers.

Universal use

For sanitary, heating, air conditioning, refrigerating and hydraulic applications. Specially suited for tubes of pressfitting systems, for hard and half-hard copper tubes and for thin-walled copper heating tubes according to DIN EN 1057.

System advantage

Only one type of bending and back formers for REMS Curvo and REMS Sinus. Therefore simple, inexpensive stocking. No confusion possible.

Cost advantage

Bender cost recovered after a small number of bends. No costs for fittings, storage, procurement. Savings in soldering joints, pressing joints and working hours. Higher safety thanks to fewer pipe joints

Execution

Compact, handy electric tool with integral absorption of torque during bending (**Patent DE 39 03 041, Patent US 5,056,347**). Super light, drive unit only 8 kg. Can be used anywhere, anytime. No setting. Simple, effortless, fast working, e.g. 90° bends, Ø 22 mm in only 6 s. Fast and creep speed operation for precise bending. Crossover, swan-neck, U-bends possible. Height adjustable machine support as accessory.

Bending formers and back formers

Form and pressure resistant, in high-strength, high-slide, glass-fibre reinforced polyamide. Optimum mating of bending formers and back formers ensures sliding appropriate to the material without cracks and wrinkles. Angle scale 0 to 180° provided on each bending former and mark on the back former ensure precise bending. Rapid change of bending formers and back formers. Bending formers and back formers for different sizes, materials and bending radii, see page 95.

Drive

Robust, maintenance-free gear. Final point safety in both directions through safety slipping clutch. Proven, powerful universal motor, 1000 W. Right and left-hand rotation. Stepless electronic safety switch for rapid and creep speed operation.

Bending lubricant

REMS bending spray ensures a permanent lubricating film for reducing energy expenditure and uniform bending. High-pressure-proof, acid-free. CFC-free, so ozone-harmless.



Patent DE 39 03 041
Patent US 5,056,347



German Quality Product





Basic-Pack

Supply format

REMS Curvo Set. Electric pipe and tube bender Ø 10–40 mm, Ø 1/4–1 3/8", up to 180°. Hard, half-hard and soft copper tubes, also thin-wall Ø 10–35 mm, Ø 3/8–1 3/8", coated soft copper tubes, also thin-wall Ø 10–18 mm, pipes of the press fitting systems made of stainless steel Ø 12–28 mm, carbon steel, also coated Ø 12–28 mm, soft precision steel tubes Ø 10–28 mm, steel pipes DIN EN 10255 Ø 1/4–3/4", electric conduit DIN EN 50086 Ø 16–32 mm, multi-layer composite tubes Ø 14–40 mm and others. Drive unit with maintenance-free gear and safety slipping clutch, universal motor 230 V or 110 V, 50–60 Hz, 1000 W, stepless electronic safety switch, right and left-hand rotation, insert bolt. Bending formers and back formers. In sturdy steel case.

Description	Art.-No.
Set 15-18-22	580026
Set 15-18-22-28	580027
Set 12-15-18-22	580020
Set 15-22-28	580022
Set 17-20-24	580023
Set 12-14-16-18-22	580021
Set 14-16-18-22-28	580028
Set 3/8-1/2-5/8-3/4-7/8"	580024
Set 16-20-26-32	580025
Set 20-25-32	580029
Set 32-40	580030
Basic-Pack (without bending and back formers)	580010

REMS Curvo Set delivered with the smaller radius bending and back former (except 580029 and 580030), see page 95¹⁾.

Accessories

Description	Art.-No.
Bending formers and back formers see page 95.	
REMS Curvo drive unit	580000
Insert bolt	582036
REMS bending spray , 400 ml	140120
Steel case with insert	586000
Machine support 3B , height adjustable, on tripod	586100
Machine support WB , height adjustable, for mounting on work bench	586150



3B



WB

Universal, compact electric tool for cold bending of pipes up to 180°. Cordless. Can be used anywhere, without vice. For workshop, job site, repair.

Hard, half-hard, soft copper tubes also thin-wall	Ø 10–28 mm Ø 3/8–1 1/8"
Coated soft copper tubes, also thin-wall	Ø 10–18 mm
Pipes of press fitting systems made of stainless steel	Ø 12–28 mm
Carbon steel, also coated	Ø 12–28 mm
Soft precision steel tubes	Ø 10–28 mm
Steel pipes DIN EN 10255 (DIN 2440)	Ø 1/4–1/2"
Electric conduit DIN EN 50086	Ø 16–25 mm
Multi-layer composite tubes	Ø 14–32 mm

REMS Akku-Curvo – wrinkle-free bending of pipes. Cordless. Universal for many pipes. Ready to use immediately without setting. Fast and creep speed with immediate stop for precise bending. Quick change of bending and back formers.

Universal use

For sanitary, heating, air conditioning, refrigerating and hydraulic applications. Mains independent. Specially suited for tubes of pressfitting systems, for hard and half-hard copper tubes and for thin-walled copper heating tubes according to DIN EN 1057.

System advantage

Only one type of bending and back formers for REMS Akku-Curvo, REMS Curvo and REMS Sinus. Therefore simple, inexpensive stocking. No confusion possible.

Cost advantage

Bender cost recovered after a small number of bends. No costs for fittings, storage, procurement. Savings in soldering joints, pressing joints and working hours. Higher safety thanks to fewer pipe joints

Execution

Compact, handy electric tool with integral absorption of torque during bending (Patent DE 39 03 041, Patent US 5,056,347). Super light, drive machine with battery pack weights only 9 kg. Proven D-shaped handle. Can be used anywhere, anytime. No setting. Simple, effortless, fast working, e.g. 90° bend Ø 22 mm only 7s. Fast and creep speed with immediate stop for precise bending. Crossover, swan-neck, U-bends possible. Height adjustable machine support as accessory.

Bending formers and back formers

Form and pressure resistant, in high-strength, high-slide, glass-fibre reinforced polyamide. Optimum mating of bending formers and back formers ensures sliding appropriate to the material without cracks and wrinkles. Angle scale 0 to 180° provided on each bending former and mark on the back former ensure precise bending. Rapid change of bending formers and back formers. Bending formers and back formers for different sizes, materials and bending radii, see page 95.

Drive

Robust, maintenance-free gear. Final point safety in both directions through safety slipping clutch. Powerful battery motor 18 V, with large power reserve, 500 W output. Right and left-hand rotation. Stepless electronic safety switch for fast and creep speed, with immediate stop.

High Power Battery

High Power battery Ni-Cd 18 V with 2.0 Ah capacity for extremely long operating time, high bending performance and large power reserves. Rapid charger Ni-Cd for short charging times (1 h). Pulse charging technique reduces memory effect for maximum battery performance.

Bending lubricant

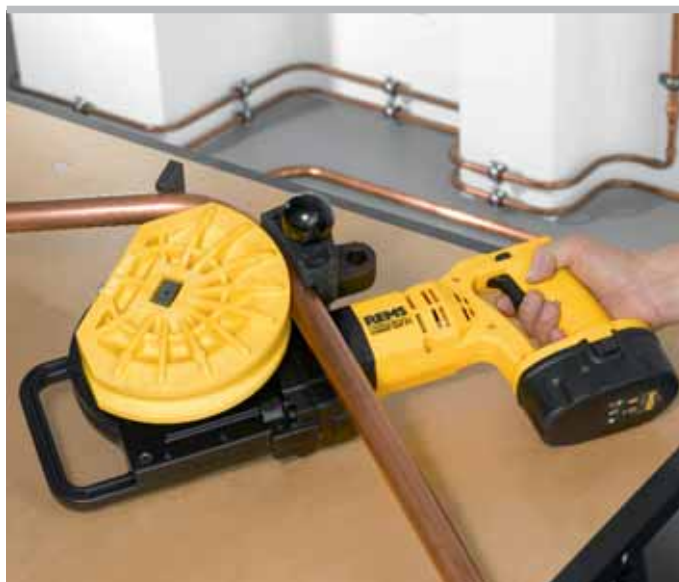
REMS bending spray ensures a permanent lubricating film for reducing energy expenditure and uniform bending. High-pressure-proof, acid-free. CFC-free, so ozone-harmless.



Patent DE 39 03 041
Patent US 5,056,347



German Quality Product





Basic-Pack



Supply format

REMS Akku-Curvo Set. Cordless tube bender \varnothing 10–32 mm, \varnothing 1/4–1 1/8", to 180°. Hard, semi-hard, soft copper pipes, also thin-walled, \varnothing 10–28 mm, \varnothing 3/8–1 1/8", soft jacketed copper pipes, also thin-walled, \varnothing 10–18 mm, pipes of the press-fitting systems made of stainless steel \varnothing 12–28 mm, carbon steel, also coated \varnothing 12–28 mm, soft precision steel pipes \varnothing 10–28 mm, steel pipes DIN EN 10255 \varnothing 1/4–1/2", electrical installation pipes DIN EN 50086 \varnothing 16–25 mm, multilayer composite tubes \varnothing 14–32 mm, among other things drive machine with D-shaped handle, maintenance-free gear with safely slipping clutch, powerful battery motor 18 V, stepless, electronic safety switch with immediate stop, right and left-hand rotation High power battery Ni-Cd 18 V, 2.0 Ah, rapid charger Ni-Cd 230 V, 50–60 Hz, 50 W. Insert bolt. Bending and back formers. In sturdy steel case.

Description	Art.-No.
Set 15-18-22	580056
Set 15-18-22-28	580057
Set 12-15-18-22	580050
Set 15-22-28	580052
Set 12-14-16-18-22	580051
Set 12-14-16-18-22-28	580061
Set 14-16-18-22-28	580058
Set 3/8-1/2-5/8-3/4-7/8"	580054
Set 16-20-26-32	580055
Set 20-25-32	580059
Basic-Pack (without bending and back formers)	580011

REMS Akku-Curvo Set delivered with the smaller radius bending and back former (except 580059), see page 95¹⁾.

Accessories

Description	Art.-No.
Bending formers and back formers see page 95.	
High-Power-Akku Ni-Cd 18 V, 2,0 Ah	565210
Rapid charger 230 V or 110 V, 50–60 Hz, 50 W	565220
Insert bolt	582036
REMS bending spray, 400 ml	140120
Machine support 3B, height adjustable, on tripod	586100
Machine support WB, height adjustable, for mounting on work bench	586150



3B



WB

Universal, robust hand tool for cold bending up to 180°. Can be used anywhere. For workshop, job site, repair.

Hard, half-hard, soft copper tubes, also thin-wall	Ø 10–22 mm Ø 3/8–7/8"
--	--------------------------

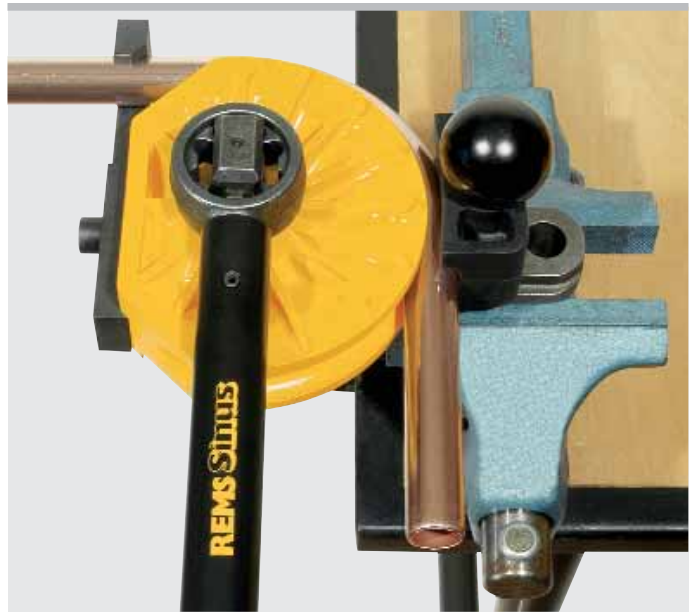
Coated soft copper tubes, also thin-wall	Ø 10–18 mm
--	------------

Pipes of press fitting systems made of stainless steel, carbon steel (coated)	Ø 12–28 mm
Carbon steel	Ø 12–22 mm

Soft precision steel tubes	Ø 10–20 mm
----------------------------	------------

Electric conduit DIN EN 50086	Ø 16–20 mm
-------------------------------	------------

Multi-layer composite tubes	Ø 14–32 mm
-----------------------------	------------



REMS Sinus – wrinkle-free bending.

Universal for many tubes. Easy bending through long lever arms. Selectable lever positioning ensures optimum bending position and power transmission. Only one type of bending and back formers for REMS Sinus and REMS Curvo.

Universal use

For sanitary, heating, air conditioning, refrigerating and hydraulic applications. Specially suited for tubes of pressfitting systems, for hard and half-hard copper tubes and for thin-walled copper heating tubes according to DIN EN 1057.

System advantage

Only one type of bending and back formers for REMS Sinus and REMS Curvo. Therefore simple, inexpensive stocking. No confusion possible.

Cost advantage

Bender cost recovered after a small number of bends. No costs for fittings, storage, procurement. Savings in soldering joints, pressing joints and working hours. Higher safety thanks to fewer pipe joints.

Execution

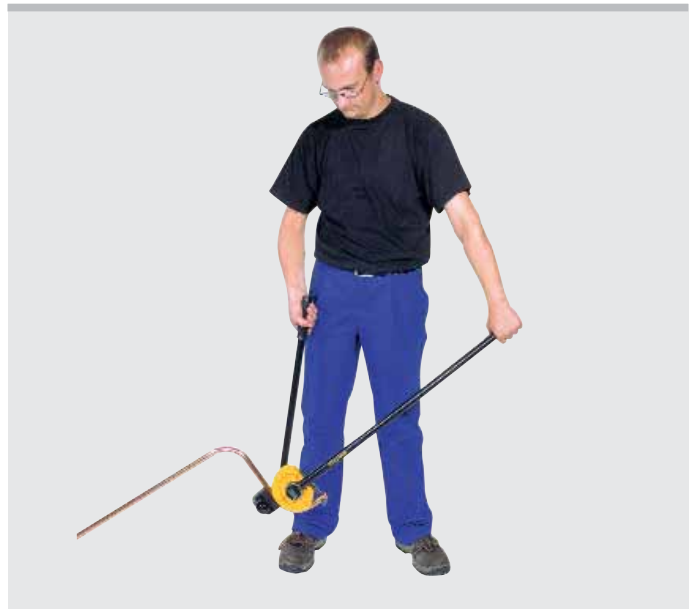
Compact, handy unit of bender drive and bending tools. Can be used anywhere, in parallel vice or free hand as double-hand-bender. Easy bending through long lever arms. Selectable lever positioning ensures optimum bending position and power transmission. Robust design, bender drive in hardened steel for high stress conditions. Simple and rapid changing of bending and back formers. Crossover, swan-neck and U-bends possible.

Bending formers and back formers

For different pipe sizes, materials and bending radii, see page 95.

Bending lubricant

REMS bending spray ensures a permanent lubricating film for reducing energy expenditure and for uniform bending. High-pressure-proof, acid-free. CFC-free, so ozone-harmless.



German Quality Product

Supply format

REMS Sinus Set. Hand tube bender Ø 10–32 mm, Ø 3/8–7/8", up to 180°. Hard, half-hard, soft copper tubes, also thin-wall Ø 10–22 mm, Ø 3/8–7/8", coated soft copper tubes, also thin-wall Ø 10–18 mm, pipes of the press fitting systems made of stainless steel, carbon steel (coated) Ø 12–18 mm, soft precision steel tubes Ø 10–22 mm, soft precision steel tubes, Ø 10–20 mm, electric conduit DIN EN 50086, Ø 16–20 mm, multi-layer composite tubes Ø 14–32 mm and others. Bender drive, insert bolt. Bending formers and back formers. REMS bending spray. In sturdy steel case.

Description	Art.-No.
Set 15-18-22	154001
Set 14-16-18	154002
Set 12-15-18-22	154003
Set 10-12-14-16-18-22	154004
Basic-Pack (without bending and back formers and bending spray)	154010

REMS Sinus Set is delivered with bending formers and back formers of the smaller radius, see page 95.

Accessories

Description	Art.-No.
Bending and back formers see page 95	
Insert bolt	582036
REMS Curvo drive unit	580000
REMS Sinus bender drive	154000
REMS bending spray, 400 ml	140120



Bending formers and back formers

Accessories for
REMS Curvo 50, REMS Curvo and REMS Sinus

Form and pressure resistant, in high-strength, high-slide, glass-fibre reinforced polyamide. Optimum mating of bending formers and back formers ensures sliding appropriate to the material without cracks and wrinkles. Angle scale 0 to 180° provided on each bending former and mark on the back former ensure precise bending. Rapid change of bending formers and back formers.

Bending former and back former for pipes Ø mm/inch O.D.	Bending radius mm	suitable for						Art.-No.	
		Cu	Cu-U soft	St 2463	St 2394-U	St 2391-2394	St 10255		St 50086
10	40	•				•			581400
12	45	•		•		•			581410
14, 10 U, 1/4 (DN 6)	50	•	•			•	•	•	581420
15, 12 U	55	•		•	•	•			581430
16, 12 U	60	•	•			•		•	581440
17, 15 U	56				•			•	581110
18, 14 U, 15 U, 3/8 (DN 10)	70	•		•		•	•	•	581450
20, 16 U, 18 U	75	•	•		•			•	581080
22, 18 U, 1/2 (DN 15)	77	•	•	•		•	•		581460
22, 18 U, 1/2 (DN 15)	88	•	•	•		•			581470
24, 22 U	75	•			•				581130
25	98	•				•		•	581180
26	98					•		•	581270
28, 3/4 (DN 20)	102 ¹⁾	•		•		•	•		581070
28, 3/4 (DN 20)	114	•		•		•	•		581310
30, 28 U	98 ¹⁾	•			•				581150
32	98							•	581280
32	114	•						•	581320
35	140	•							581350
40	140	•						•	581330
3/8" (9.5 mm)	43	•							581200
1/2" (12.7 mm)	52	•							581210
5/8" (15.9 mm)	63	•							581220
3/4" (19.1 mm)	75	•							581230
7/8" (22.2 mm)	98	•							581240
1" (25.4 mm)	101	•							581370
1 1/8" (28.6 mm)	102	•							581260
1 1/8" (28.6 mm)	115	•							581380
1 1/4" (31.8 mm)	114	•							581320
1 1/4" (31.8 mm)	133	•							581390
1 3/8" (34.9 mm)	140	•							581350



- 1) According to DVGW work sheet GW 392 minimum bending radius of 114 mm required for copper tubes Ø 28 mm.
 Cu: hard, half-hard, soft copper tubes, also thin-wall, DIN EN 1057
 St 2463: stainless steel tubes of pressfitting systems DIN 2463
 St 2394-U: coated carbon steel pipes of pressfitting systems DIN 2394
 St 10255: steel pipes (thread pipes) DIN EN 10255 (DIN 2440)
 St 2391-2394: precision steel tubes DIN 2391-2394, carbon steel pipes DIN 2394
 St 50086: electric conduit DIN EN 50086
 U: coated
 V: multi-layer composite tubes of pressfitting systems